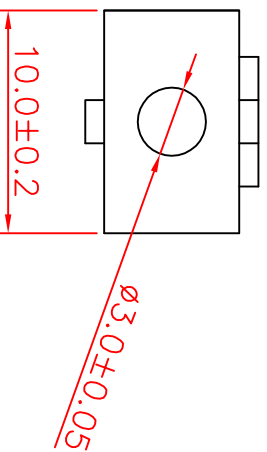
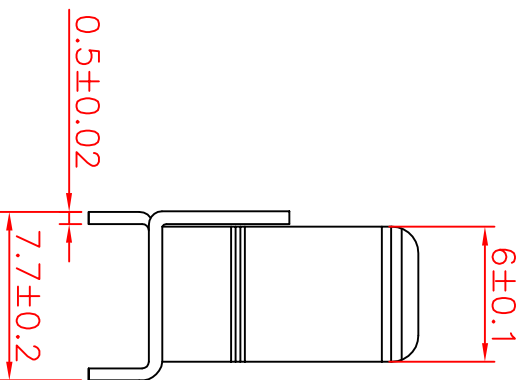
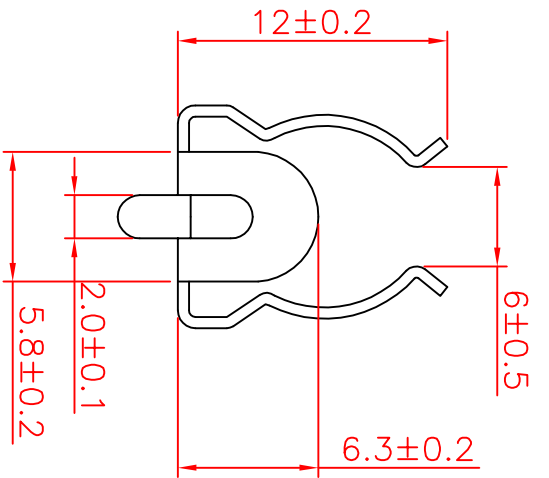


ALL INFORMATION CONTAINED OR DISCLOSED BY THIS DOCUMENT IS CONSIDERED CONFIDENTIAL AND PROPRIETARY BY ANDU ELECTRONICS CO.LTD. ALL DESIGN, MANUFACTURING, USE, REPRODUCTION, AND ALL SALES RIGHTS, ARE EXPRESSLY RESERVED BY AND TO ANDU ELECTRONICS CO.LTD. AND COMMUNICATION OF THIS INFORMATION TO OTHERS IS PROHIBITED WITHOUT THE PRIOR WRITTEN CONSENT OF SELLU

DRAWING REVISIONS				
REV	S/N	DESCRIPTION	APPROVED	DATE
A	20080210-03	ORIGINAL RELEASE		



NOTES: UNLESS OTHERWISE SPECIFIED.

1. material: 黄铜brass, T=0.5mm;
2. finish: 镀镍Ni plated;
3. removed burrs and sharp edge.
4. Mounts w/2.5mm rivet or screw.
5. For 10.3dia. Fuses.
6. Suitable rated current: 30A.

		东莞赛力科技和电路保护有限公司	
SELL TECHNOLOGY AND CIRCUITS PROTECTION			
ROHS COMPLIANT		Fuse Clip W/ear type	
UNLESS OTHERWISE STATED			
WALL THICKNESS		10x38mm Fuse	
LINEAR	.XX	± 0.15 MM	MM
ANGULAR	.XXX	± 0.05 MM	MM
DRAFT ANGLE/SIDE	0.5 ° MAX	DFTS	Tommy Qiu
BURR & FLASH	0.10 MAX	CHKD	07-12-08
BREAK CORNERS	0.20 R MAX		
PARTING LINE MISMATCH	0.05 MAX	APPD	SL-1038-1